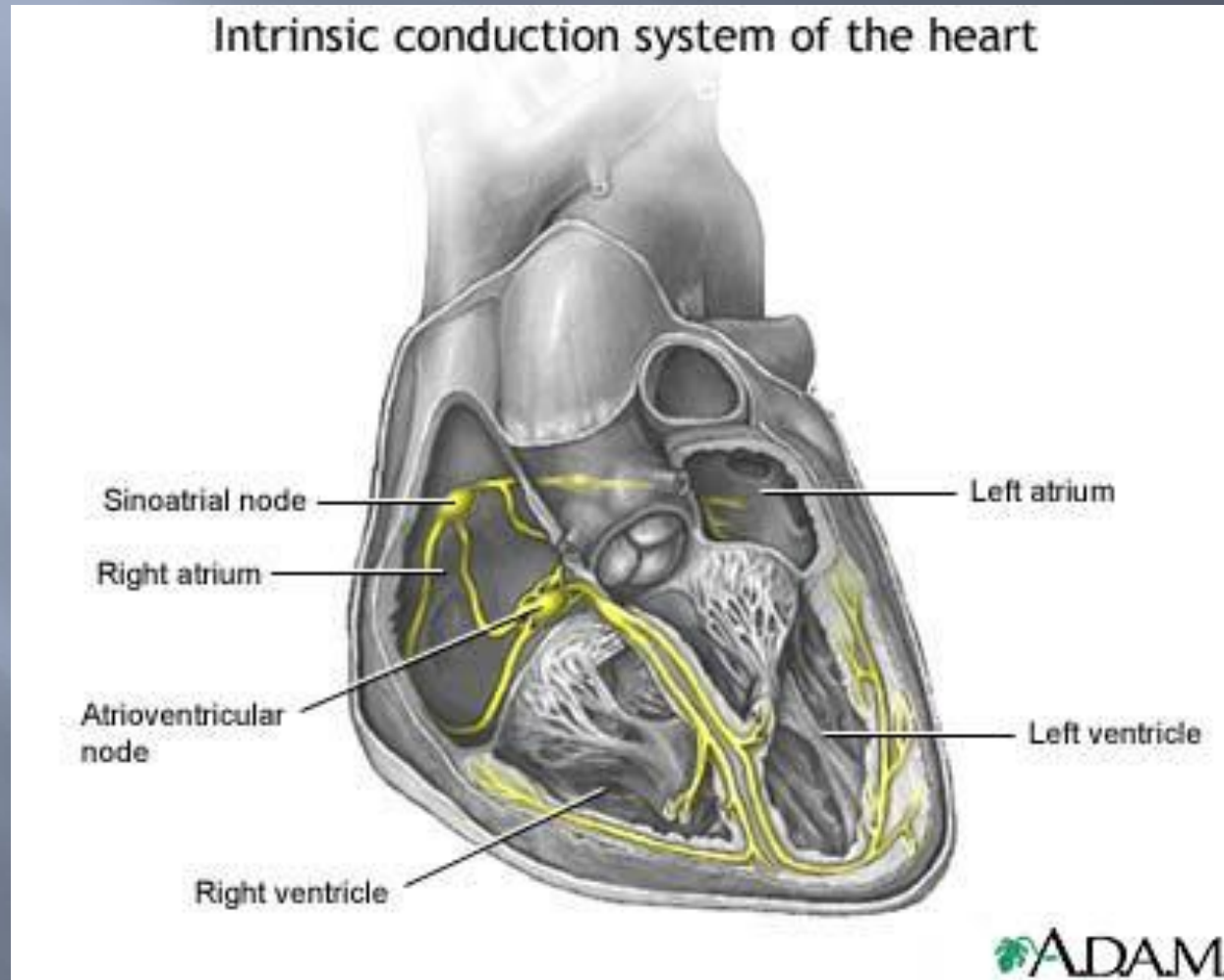


HEART PHYSIOLOGY

Dr. Steven Hammer
Anatomy and Physiology II Lab
Indian River State College

Electrical Conduction System



Auscultation

Heart Sound Locations and audio

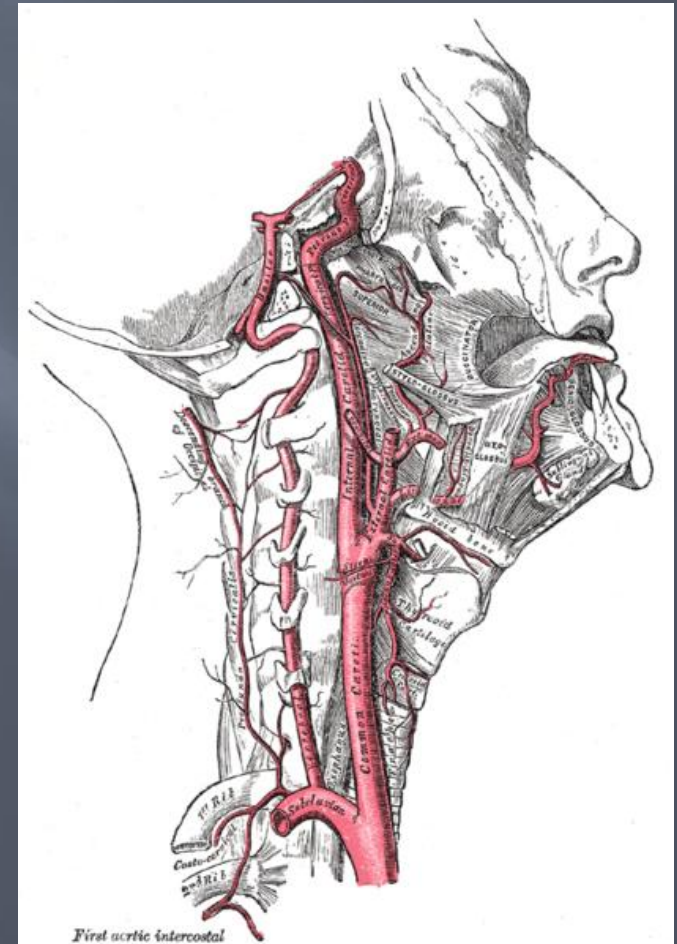
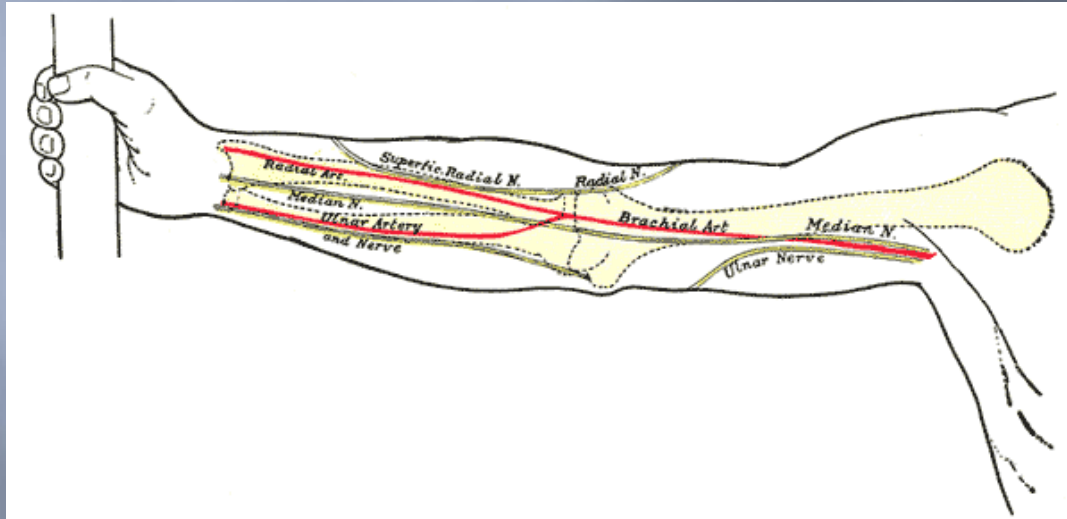
Heart Sounds and EKG tutorials

Bell or Diaphragm?

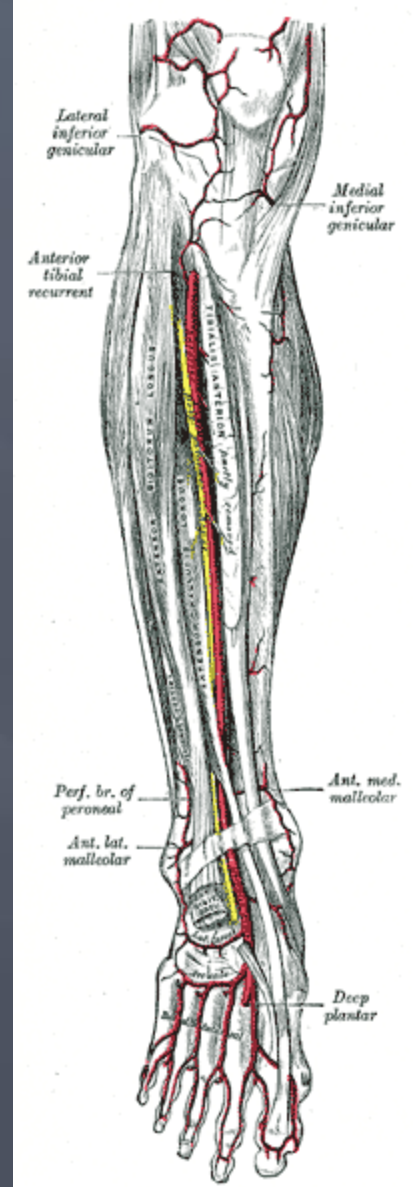
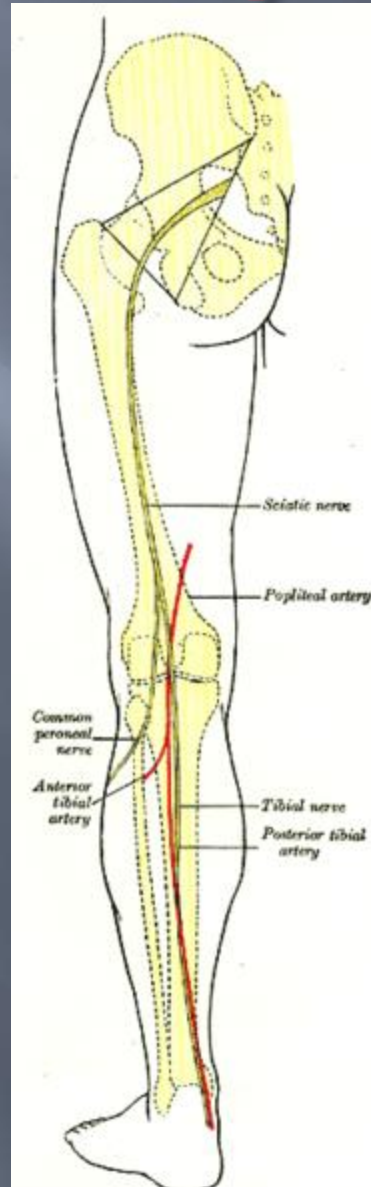
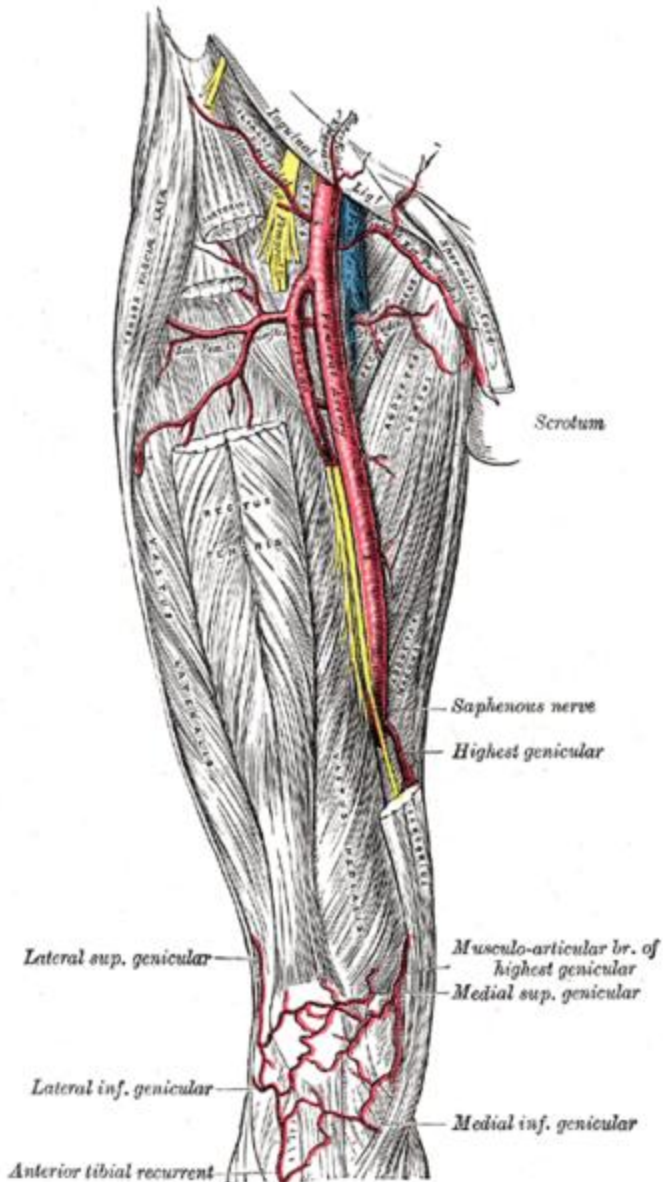
- Bell low frequencies
- Diaphragm High Frequencies

<u>Pulmonary valve</u> (to <u>pulmonary trunk</u>)	second <u>intercostal space</u>	left upper sternal border
<u>Aortic valve</u> (to <u>aorta</u>)	second intercostal space	right upper sternal border
<u>Mitral valve</u> (to <u>left ventricle</u>)	fifth intercostal space	medial to left midclavicular line
<u>Tricuspid valve</u> (to <u>right ventricle</u>)	fourth intercostal space	lower left sternal border

Upper Extremity and Neck Pulses

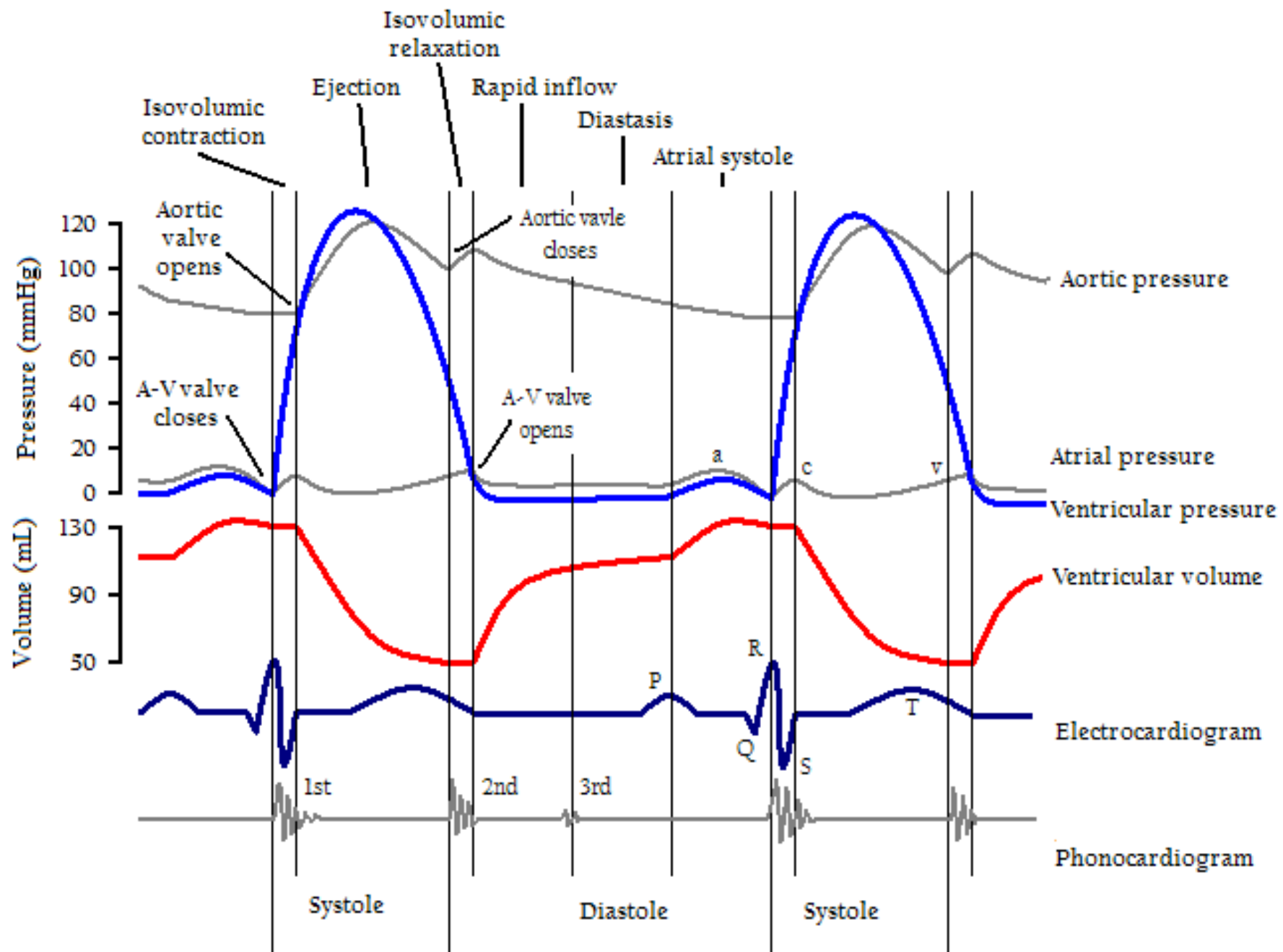


Lower Extremity Pulses



Detailed Cardiac Cycle

- ▣ Atrial Systole
- ▣ Isovolumetric contraction
- ▣ Rapid Ejection
- ▣ Reduced Ejection
- ▣ Isovolumetric Relaxation
- ▣ Rapid Ventricular Filling
- ▣ Reduced Ventricular Filling
- ▣ Animated Heart Cycle



Blood Pressure Measurement

- ▣ Body Position
- ▣ Arm Position (2mmHg for every inch)
- ▣ Cuff Size and Position
- ▣ Sounds
- ▣ Palpation
- ▣ Estimating BP from pulses (80,70,60)